

# 4" LED Curve – Surface Mount

LED

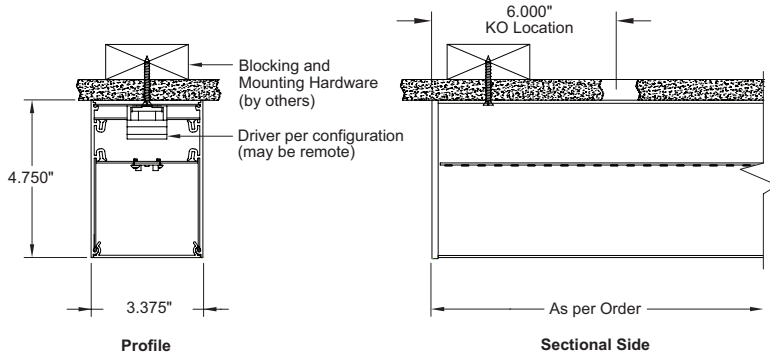


LED Curve – Direct Surface Mount with Flush Snap-in Lens

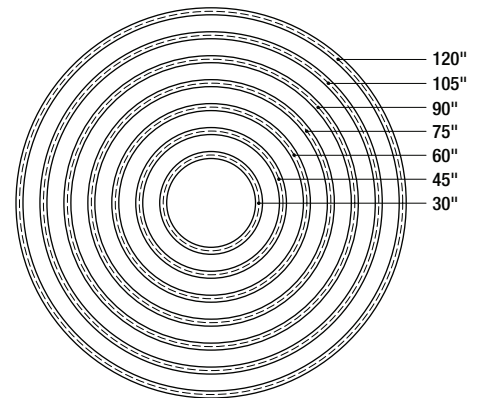
CSD4

Job Name

Fixture Type

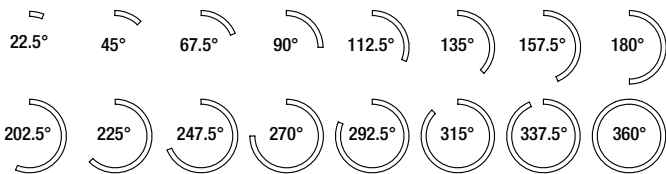


**Standard Radius**  
Measured to Center Line of Fixture



### Standard Arcs

Available in all Radii including Full Circle



LED Surface Curves easily join with our linear surface fixtures to create virtually any illuminated shape or pattern. Direct surface mount curves utilize high performance LED boards and flush snap-in diffusion lenses.

### Features

- Starfire's proprietary EvenGlow™ system provides uniform illumination from end-to-end without lamp imaging, bright spots or shadows
- Seven standard radii from 30"–120"
- Custom radii from 24" and up
- Small standard arc increments 22.5°–360° allow for the creation of virtually any shaped fixture
- Custom arcs at any angle
- Seamlessly joins to straight runs of Starfire 4" surface fixtures and X, T, & L shaped surface connectors with matching lens illumination and dimming
- Exceptional lumen per watt efficiency
- High efficiency, low cost, Tunable White option and RGB & RGBW options

### Curve Surface Segment Order Guide

CRI	Color Temp	Output	Dimming	Radius (")	Arc (°)	Segment
8 80+	27 2700K (90 CRI only)	S Standard	S Std. 0-10V 1%	30 45	22.5 45 67.5	B Beginning
9 90+	30 3000K	H High	L Lutron <sup>(1)</sup>	60 75	90 112.5 135	M Middle
R RGB & RGBW	35 3500K	M Maximum	D DALI 1%	90 105	157.5 180 202.5	E End
	40 4000K	Custom: Specify Lm/Ft <sup>(1)</sup>	P PoE <sup>(1)</sup>	120	225 247.5 270	S Stand alone
	TW 2700K - 6500K	F Fixed for RGB & RGBW	W Wireless <sup>(1)</sup>	Custom: (24" & Up)	292.5 315 337.5	
	GB RGB Color		X DMX for RGBs		360	
	G2 2700K RGBW				Custom: Cxxx	
	G3 3000K RGBW					
	G4 4000K RGBW					

Product Code Example: CSD4-L830HS-30-45-B-W

### Linear Surface Segment Order Guide (if needed)

CRI	Color Temp	Output	Dimming	Length (")	Segment
8 80+	27 2700K (90 CRI only)	S Standard	S Std. 0-10V 1%	Nominal: 24 36 48	B Beginning
9 90+	30 3000K	H High	L Lutron <sup>(1)</sup>	60 72 84	M Middle
R RGB & RGBW	35 3500K	M Maximum	D DALI 1%	96 (see Page 2)	E End
	40 4000K	Custom: Specify Lm/Ft <sup>(1)</sup>	P PoE <sup>(1)</sup>	Custom: Cxxx (in inches)	S Stand alone
	TW 2700K - 6500K	F Fixed for RGB & RGBW	W Wireless <sup>(1)</sup>		
	GB RGB Color		X DMX for RGBs		
	G2 2700K RGBW				
	G3 3000K RGBW				
	G4 4000K RGBW				

Product Code Example: SD4-CL830SH-72-M-W

<sup>(1)</sup> Specify – Factory to confirm



STARFIRE LIGHTING, INC.  
7 Donna Drive, Wood-Ridge, NJ 07075  
starfirelighting.com

P 201.438.9540  
F 201.438.9541

All designs and drawings are the property of STARFIRE LIGHTING, INC. We reserve the right to make changes to specifications and approved designs at any time without notice to facilitate manufacturing methods to the extent that such changes do not compromise design integrity. All performance specifications are subject to +/- 10% deviation.

# LED Curve – Surface Mount

## CSD4

### Fixture Specifications

- Housing/Trim: Heavy-duty extruded aluminum
- Finish: White (std), custom available
- Weight: Approx. 3.5 lbs. per linear foot
- Consult factory for RGB specifications
- UL Listed, (indoor non-condensing)

### Electrical

- Power consumption: Per specification based on LED configuration
- Input Voltage: 120-277V universal driver
- Ambient operating range: -4 °F to +100 °F
- Integral electronic drivers(may be external depending upon radius and driver type. Consult factory)
- Integral wiring bus between fixture sections
- Drivers with full dimming range at any output choice
- 1% Dimming: 0-10V standard (included), consult factory for other options

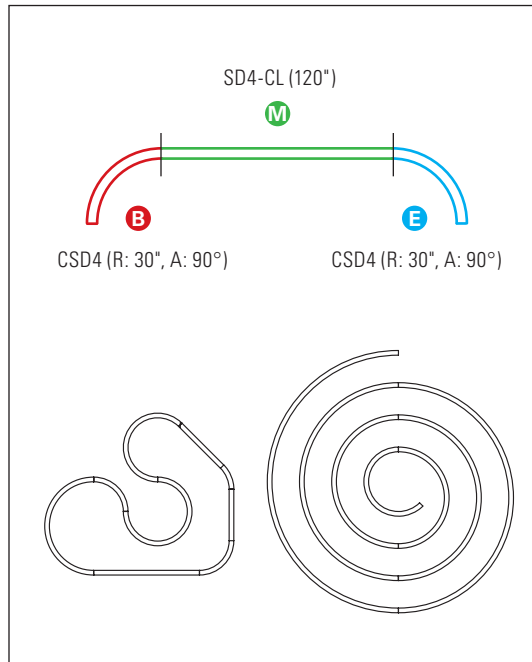
### Mounting

- Easily mounts to structural blocking through top of housing
- Contact factory for special ceiling conditions

### Options (Consult factory)

- Occupancy sensor, daylight control module
- EM pack in 4ft segments. Delivers 800+ total lumens for 90 mins. May be remote in tight radius curves, consult factory
- Wireless controls

### Multi-Segment Examples



### Segment Key

- B** Beginning - Starts with End Cap
- M** Middle - No End Cap
- E** End - Ends with End Cap
- S** Stand Alone - Ends Cap both Ends

BEGINNING to END is always clockwise on a segment

### Straight Segment Overall Length

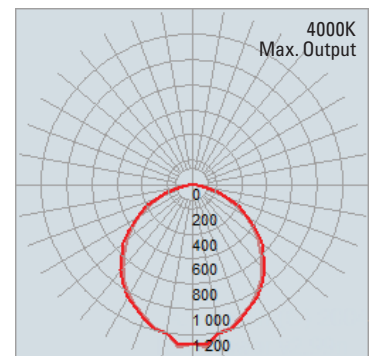
Nominal	Actual
24"	23.5"
36"	34.5"
48"	45.5"
60"	56.5"
72"	72"
84"	84"
96"	95"

Consult factory for fixture installation dimensions

## White LED Strip

High output edge-to-edge and end-to-end illumination

- Choice of lumen output levels:
  - S:** Standard, **H:** High, **M:** Maximum, **C:** Custom (between 200 and 900 Lm/Ft)
- LED Efficiency: Up to 160 Lm/Wt at Maximum output and 180 Lm/Wt at Standard power (at 80+ CRI)
- Proprietary in-house, ultra-tight Vf binned LEDs for uniform intensity
- 2700K, 3000K, 3500K, 4000K and Tunable White: 2700K-6500K
- CRI: 80+ or 90+
- Color Consistency: Equal or better than 3 SCDM with chip mixing
- L70: 50,000+ hours at Maximum output
- 5 year limited warranty\*



### Curve Segment Efficacy

80 CRI		4000K		3500K		3000K		2700K (90 CRI)	
Output Setting	Lm/Ft	Wt/Ft	Lm/Wt	Wt/Ft	Lm/Wt	Wt/Ft	Lm/Wt	Wt/Ft	Lm/Wt
<b>S</b> Standard	<b>500</b>	4.8	103.4	4.9	101.3	5.2	97.1	5.9	85.1
<b>H</b> High	<b>750</b>	7.7	98.0	7.8	95.9	8.2	91.7	9.6	78.4
<b>M</b> Maximum	<b>900</b>	9.5	94.8	9.7	92.7	10.2	88.5	12.1	74.4

\* See Starfire website for Product Limited Warranty



STARFIRE LIGHTING, INC.  
7 Donna Drive, Wood-Ridge, NJ 07075  
starfirelighting.com

P 201.438.9540  
F 201.438.9541

All designs and drawings are the property of STARFIRE LIGHTING, INC. We reserve the right to make changes to specifications and approved designs at any time without notice to facilitate manufacturing methods to the extent that such changes do not compromise design integrity. All performance specifications are subject to +/- 10% deviation.

