

LED Open Aperture – Multi-Lamp, Adjustable Downlights

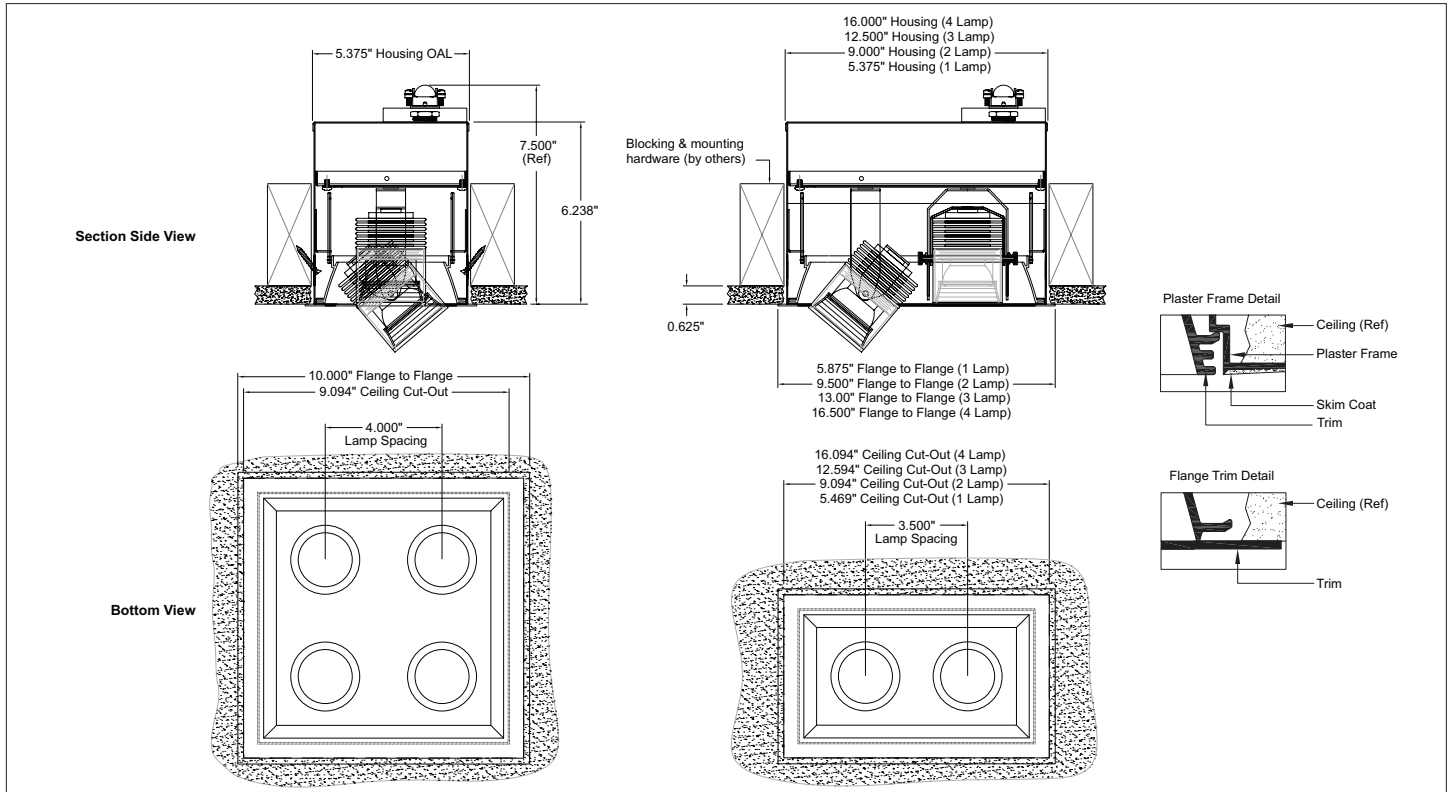
ADM



Open Aperture Downlight
with Integral High Power LED
Adjustable Downlight Modules

VAD

Job Name
Fixture Type



LED DOWNLIGHT MODULE

FIXTURE

VAD-	A-	LED DOWNLIGHT MODULE					FIXTURE				
Lamp Qty/Conf.	CRI	Color Temperature	Output	Dimming	Lens	Beam Angle	ADM Finish	Ceiling	Trim	Housing	Whip
1 Lamp	8 80+	27 2700K (90CRI only)	S Standard	S Std. 0-10V 1%	CL Clear, Std.	18 18° Narrow Spot	B Black, Std.	P Plaster Trim	W White, Std.	B Black, Std.	N No Whip
2 Lamp	9 90+ (std)	30 3000K	H High	L Lutron 1% ⁽²⁾⁽³⁾	DF Diffuser ⁽⁴⁾	24 24° Spot	W White	F Flange Trim	B Black	W White	W Whip
3 Lamp		35 3500K	M Maximum	D DALI 1% ⁽²⁾⁽³⁾	HL Hexell Louver ⁽⁴⁾	38 38° Flood			Custom: Specify RAL#	Custom: Specify RAL#	W Std. Whip
4 Lamp (In-line)		40 4000K	Custom: Specify Lm/Ft. ⁽²⁾	P PoE ⁽²⁾⁽³⁾		60 60° Wide Flood					
S 4-Lamp Square		TW Tunable White ⁽¹⁾⁽²⁾ DW Dim-to-Warm ⁽¹⁾⁽²⁾		2 Wire (phase-cut) ⁽³⁾ T Step (10-70%) ⁽²⁾⁽³⁾ W Wireless ⁽²⁾⁽³⁾							

Product Code Example: VAD-1A-830HWDF24-B-F-W/B-N

Open aperture downlight with a splay interior housing in a choice of plaster or flange trims. Integral high power ADM Adjustable Downlight Modules available in 1-4 lamp in-line, and 4-lamp square configurations. The LED downlight modules utilize a high performance COB component and reflector behind a clear or diffusion lens. The ADM is sleek and stylish with an enormous amount of light for its very small size. Ideal for office, retail, and residential applications.

Features

- Fully adjustable (0-40° tilt and 0-365° rotation)
- Lens regressed 0.65" to reduce glare
- High power up to 1500 Lm/per module meet precise lighting requirements
- Beam angles and optical accessories can be changed in the field

Fixture Specifications

- Housing: Heavy-duty rolled steel
- Trim and Splay Housing: Extruded aluminum
- Weight (Approx.): 1-lamp: 2 lbs, 2-lamp: 3 lbs, 3-lamp: 4 lbs, 4-lamp: 5 lbs
- UL Listed (indoor non-condensing)

Electrical

- Power consumption: Per specification based on LED configuration
- Input Voltage: 120-277V universal driver
- Ambient operating range: -4 °F to +100 °F
- Integral 0-10V electronic drivers, others external
- Through branch wiring capable
- Dimming: 0-10V 1% standard, contact factory for options

Mounting

- Retrofit-type mount. Contact factory for special ceiling conditions.

Options (Consult factory)

- 6 ft armored whip
- Occupancy sensor, daylight control module
- EM pack provides up to 700 lumens of output for up to 90 minutes depending on CCT. (Single ADM module of 4-Lamp configurations only)

Photometry (Consult factory)

- Refer to ADM Spec Sheet

(1) 90 CRI, Std., TW: 2700K-6500K, other CCT ranges possible, consult factory

(2) Specify – Factory to confirm

(3) External drivers only

(4) Option will reduce efficiency and maximum output, consult factory



STARFIRE LIGHTING, INC.
7 Donna Drive, Wood-Ridge, NJ 07075
starfirelighting.com

P 201.438.9540
F 201.438.9541

All designs and drawings are the property of STARFIRE LIGHTING, INC. We reserve the right to make changes to specifications and approved designs at any time without notice to facilitate manufacturing methods to the extent that such changes do not compromise design integrity. All performance specifications are subject to +/- 10% deviation.