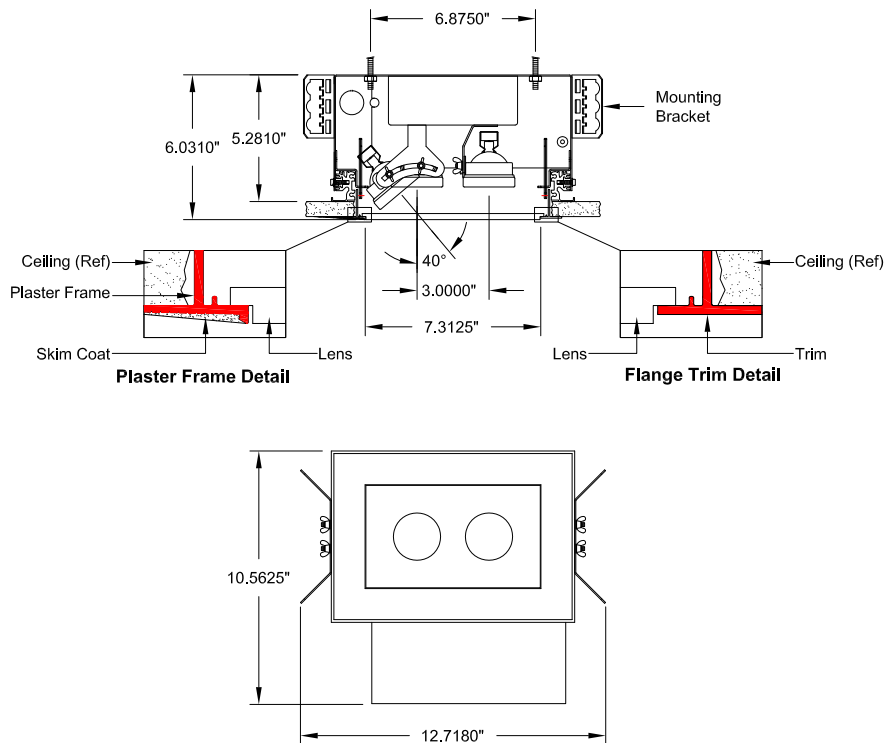


Downlight, Flush Lens with Virtual Pivot Lampholder



MR16



Ceiling Cut-out : 5.2500" x 8.2500"

Trim Flange : 6.0625" x 9.0625"

Aperture: 4.3125" x 7.3125"

-2-M6 - /W-VP-

Trim Type	Wattage	Trim Finish	Voltage
<input type="checkbox"/> VLP Plaster	<input type="checkbox"/> 20	<input type="checkbox"/> W White	<input type="checkbox"/> 1 (120V)
<input type="checkbox"/> VLF Flange	<input type="checkbox"/> 37	<input type="checkbox"/> B Black	<input type="checkbox"/> 2 (277V)
	<input type="checkbox"/> 50		

Description

Recessed downlight fixture with flush rabbeted lens. Virtual pivot lampholders. Two MR16 lamps. Flanged or plaster frame trim.

Features

- Standard Lens: Solite
- Below ceiling access to the transformer and wiring.
- Lampholders are adjustable from 0°-40°.
- Plaster frame trim provides 0.062" reveal to minimize skim coat cracking.
- Integral Thermal Protection.

Fixture Specifications

Dimensions: 12.718"L x 10.562"W x 5.281"H
 Weight: Approx. 12 lbs.
 Ceiling Cutout: 8.25"L x 5.25"W

Electrical

- Power Consumption: 100 watts max.
- Ambient temperature 100 °F. maximum.
- Integral toroidal transformer.
- Through branch wiring capable.

Mounting

Universal mounting brackets included.
 Contact factory for special ceiling conditions.

Options (Consult factory)

- Lenses: Page 2
- Photometry: Page 3



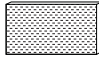

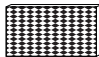

All designs and scaled drawings shall remain the property of STARFIRE LIGHTING, INC., and may not be reproduced or transmitted without expressed written consent. STARFIRE LIGHTING, INC. reserves the right to make changes on approved designs to facilitate manufacturing methods to the extent that such changes do not compromise design integrity.

VL-2-M6

Job Name:

Fixture Type:

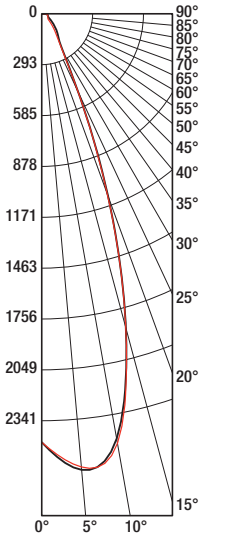
Lens Options

	Lenses		Cat. No.
<input type="checkbox"/>		Solite Spread Lens	S0
<input type="checkbox"/>		Frosted Solite Spread Lens	FS
<input type="checkbox"/>		Prismatic Spread Lens	PR
<input type="checkbox"/>		Frosted Prismatic Spread Lens	FP

For other lens options, consult factory.

VersaLux™ Series VL

Downlight, Flush Lens with Virtual Pivot Lampholder

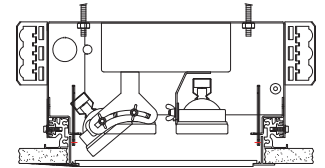


2 Lamp Photometrics

50 Watt MR16, 38° Flood

Solite Lens

Photometry reports for other fixture configurations, consult factory



Total Luminaire Efficiency: 83.40%

Candela Distribution

	0	22.5	45	67.5	90
0	2465	2465	2465	2465	2465
5	2634	2601	2627	2614	2617
10	2482	2490	2481	2467	2509
15	1869	1860	1868	1865	1867
20	1115	1108	1110	1106	1109
25	497	498	499	493	490
30	238	241	243	235	226
35	169	174	177	159	147
40	138	144	141	116	103
45	109	114	106	80	70
50	83	84	72	55	48
55	64	64	54	46	44
60	49	48	44	41	41
65	41	42	41	39	40
70	39	39	39	39	37
75	36	37	37	36	35
80	35	35	34	35	34
85	26	26	27	27	27
90	10	9	10	10	9

Zonal Lumen Summary

5	125
10	236
15	265
20	208
25	115
30	65
35	53
40	46
45	38
50	29
55	24
60	21
65	20
70	20
75	19
80	19
85	15
90	3

Utilization

RC	80				70				50			30			10			Flux
	70	50	30	10	70	50	30	10	50	30	10	50	30	10	50	30	10	
0	100	100	100	100	98	98	98	98	93	93	93	89	89	89	86	86	86	84
1	94	92	89	87	92	90	88	86	86	85	83	83	82	81	78	78	78	77
2	90	85	81	78	88	84	80	77	81	78	76	78	76	74	72	72	72	71
3	85	80	75	72	84	78	74	71	76	73	70	74	71	69	67	67	67	66
4	81	75	70	66	80	74	69	66	72	68	65	70	67	64	63	63	63	62
5	78	71	66	62	76	70	65	62	68	64	61	67	64	61	59	59	59	59
6	74	67	62	59	73	66	62	58	65	61	58	64	60	58	56	56	56	56
7	71	64	59	56	70	63	59	55	62	58	55	61	58	55	54	54	54	53
8	69	61	56	53	68	61	56	53	60	56	53	59	55	52	51	51	51	51
9	66	58	54	51	65	58	54	51	57	53	50	57	53	50	49	49	49	49
10	64	56	52	48	63	56	51	48	55	51	48	54	51	48	47	47	47	4