

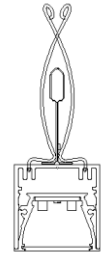
# 1" VersaLux Grid Mount LED

Series GDX1

Linear LED Grid Mount with Flush Lens, Remote Driver

## Installation Instructions

**Overview:** GDX1 fixtures are intended to be installed on the underside of a variety of suspended ceiling grid systems utilizing proprietary spring clips. The remote driver can also be attached to the top side of the ceiling grid with industry standard grid clips. All clips are provided with the fixture and allow tool-less attachment. Ceiling grid members must be securely attached to building structure and local building codes must allow for grid supported fixtures.



### Preparation

Install power feeds to locations where remote drivers will be affixed. Remote drivers can support one or multiple fixture sections based on configuration. See approved submittal drawings for further information on driver connections and cable lengths to ensure remote drivers can be properly positioned. If already installed remove ceiling tiles on either side of grid member that fixture is attached to.

### Warning:

- Do not drill through the fixture for any reason.
- Some disassembly is required for certain configurations.
- Power and dimming wiring must be installed according to local electrical codes.

### Step 1: Unpacking

Unpack fixture sections and remote driver enclosures. Generally sections from 4 to 8 foot in length will have a dedicated remote driver hard wired to it. Shorter sections will be grouped and connected to a single remote driver to minimize the number of AC power connections needed. These sections will have cables that plug into the remote drivers. In these cases the drivers are programmed to support specific fixture sections.

#### NOTE: for remote drivers supporting multiple sections

(1) Fixture sections must be connected to their designated driver otherwise uneven lighting will occur.

(2) All fixture sections must be connected to their designated driver before power is applied otherwise fixtures sections could be damaged.

Fixtures sections are shipped with lighting modules installed. Unless hubs are being used to join sections, fixtures do not have to be disassembled.

### Dimensions

Fixture sections are sized to fit between standard grid members. Hubs are sized to maintain uniform fit between grid members. (Figure 1) Hubs should be located at grid intersections. Custom length sections can be any length and may cross over grid intersections

Nominal	Actual Length
24"	22.50"
30"	28.50"
48"	46.50"
60"	58.50"
96"	94.50"
120"	118.50"
144"	142.50"
Hub	1.5" x 1.5"

Figure 1

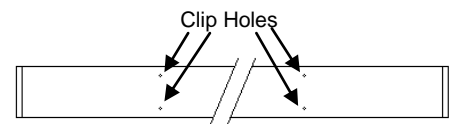


Figure 2

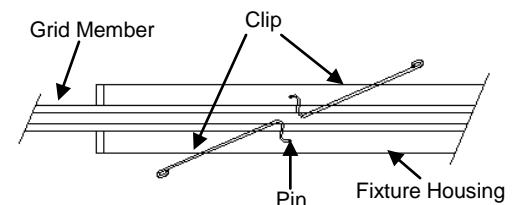


Figure 3a Top View

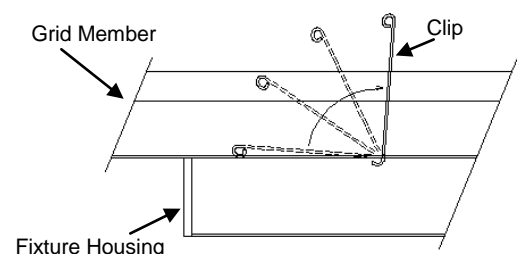


Figure 3b Side View



# 1" VersaLux Grid Mount LED

Series GDX1

Linear LED Grid Mount with Flush Lens, Remote Driver

## Installation Instructions

### Step 2: Mounting

#### Individual Fixture Sections (no hubs)

Before raising the fixture section, identify the clip holes on the top of the fixture housing as shown on Figure 2. This will make locating them easier when the housing is in place. Raise the fixture section and center on bottom of grid member. Place a Velcro strap (provided with clips) around fixture to hold it in position. Make sure the power cord is on the side of the grid member and not between the fixture section and the grid member.

At one end of the section, insert the pin end of each clip into each hole as shown in Figure 3a. They must be in opposing directions and flat on top of the grid member. Raise the loop end of the clips so the bottom edges are pointing to the center of the grid as shown in Figure 3b. When both clips are raised, bring the loops together and twist them over each other in a counter clockwise direction so they interlock Figure 3c. Repeat this process at the other end of the fixture section. NOTE: if required by local code, loops at the top of the clips can be used as a tie point for safety cables.

Remove the Velcro strap

For sections 4 feet or longer the remote driver enclosure is hard wired to the fixture section. Simply clip it to the grid member above the fixture section as shown in Figure 4

Multiple sections less than 4 feet will be supported by one driver which should be located central to them. Route the power cable to that location and clip the associated remote driver on top of a grid member so that all sections cables can reach it.

Repeat process for additional sections

#### If Hubs are being used

If a layout was provided, factory will preinstall hubs at one end of designated sections and removed the end cap from the other. Install sections according to approved submittal drawings and section labels. If no layout was provided, fixture sections are shipped with two end caps attached and Hubs are shipped separately. Different types of Hubs have end-caps attached on their sides to form straight (I), L, T, or X junctions. See Figure 5 Select the appropriate hub to create the desired pattern

#### First Section with Hub

If possible, start with a section at the end of the run (it will begin with an end cap and have a hub at the other end)

Before raising, remove lighting module by carefully prying it out of housing. Twist a small screw driver in the slot in the housing then pull the module free of its retention clips. Figure 6

Do not disconnect the lighting module from its wiring or safety chain attachments, just move it out of the way.

Counter clockwise

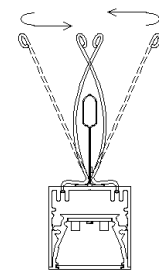


Figure 3c Profile View

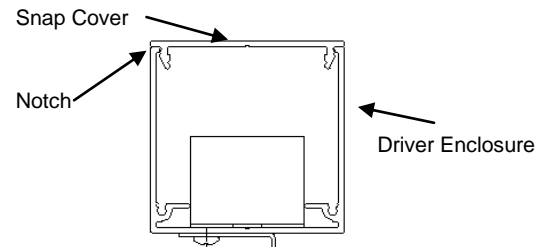


Figure 4

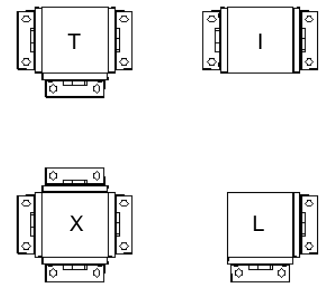
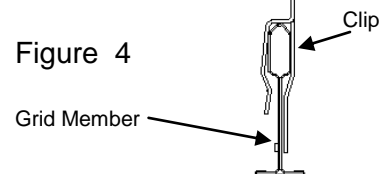
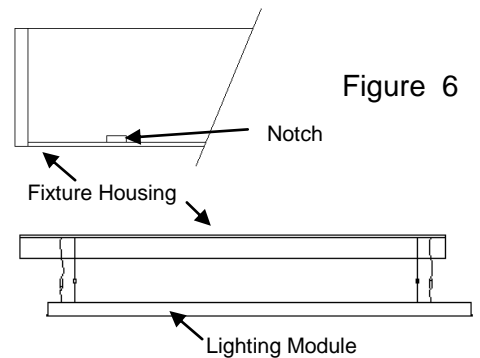


Figure 5



# 1" VersaLux Grid Mount LED

Series GDX1

Linear LED Grid Mount with Flush Lens, Remote Driver

## Installation Instructions

If hub is not preinstalled at the desired location remove the two screws holding the end cap in that location, pull the end cap out of the housing. It can be discarded. Figure 7. Insert the proper hub face in the same position as the removed end cap and reinstall the screws holding it tight to the housing. Figure 8.

Reinstall the lighting module into the housing, making sure it snaps firmly in all the retention clips. If it will not snap in make sure the wiring and safety chains are out of the way.

Mount this section to the grid as described above

Locate the section to be attached to the hub. Before raising, remove its lighting module as described above

Do not disconnect the lighting module from its wiring or safety chain attachments, just move it out of the way.

If end cap and hub have not been configured at the factory then, at the end of the housing where the hub is to connect remove the end cap as described above. If another hub is needed at the other end install it as described above.

Raise the housing to the grid with the lighting module hanging below it and use the Velcro straps to hold the housing to the grid member. Slide the housing onto the hub so it is fully engaged and install the two screws as described above.

Install the grid clips as described above and remove the Velcro straps.

Reinsert the lighting module into the housing as described above.

Continue until the entire fixture is attached to the grid.

### Step 3: Wiring

#### For drivers supporting one fixture section

Snap the driver enclosure on the grid member. Pry off the cover by twisting a screw driver blade in the notch between the cover and the housing and pulling the cover free Figure 6

Remove the 7/8" knockout at the line voltages side of the housing. Attach flex conduit using an approved knockout connector. Make power and dimming connections according to the chart Figure 9.

Snap the cover in place Figure 10

#### For drivers supporting multiple fixture sections

Complete all steps above.

Before re-installing the cover, at the low voltage end, push each low voltage connector from the fixture sections through the star knockout bushing and plug into a mating receptacle Figure 11

(1) Fixture sections must be connected to their designated driver otherwise uneven lighting will occur.

(2) All fixture sections must be connected to their designated driver before power is applied otherwise fixtures sections could be damaged.

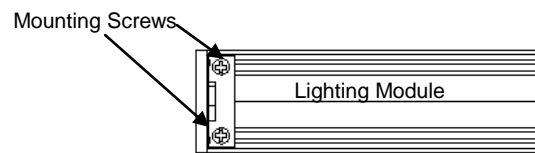


Figure 7

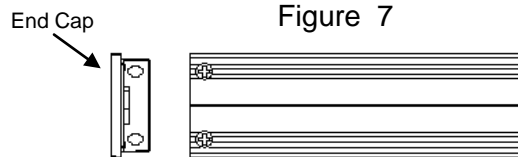


Figure 8

Function	Standard 0-10V Dimming
Switched Line (120-277V)	Black
Neutral	White
Ground	Green
0-10V (+)	Purple
0-10V (-)	Grey

Figure 9

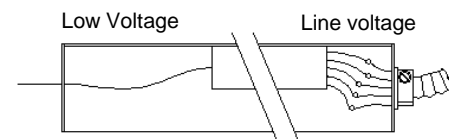


Figure 10

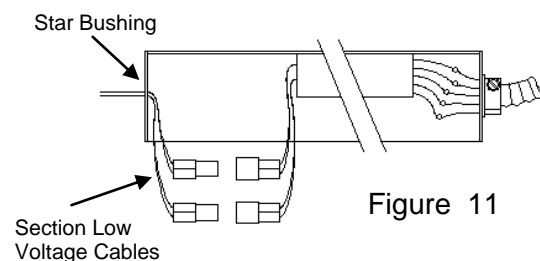


Figure 11



# 1" VersaLux Grid Mount LED

Series GDX1

Linear LED Grid Mount with Flush Lens, Remote Driver

## Installation Instructions

### Step 4: Installing Ceiling Tiles

After fixture are in place and tested, install the ceiling tiles in the normal fashion. At locations where power cables exit fixture you may cut a small notch in the tile to allow the cable to pass and the tile to lay flat on the grid member. The notch should not be visible from below. Figure 12

### Service and repair

DO NOT attempt to repair fixtures without first contacting the factory. Improper repair actions will void the warranty and may result in damage to the fixture components. Driver and LED components are custom configured at the factory. Generic replacements CANNOT be used. If any parts need replacing, they can be obtained from factory, properly configured for each fixture.

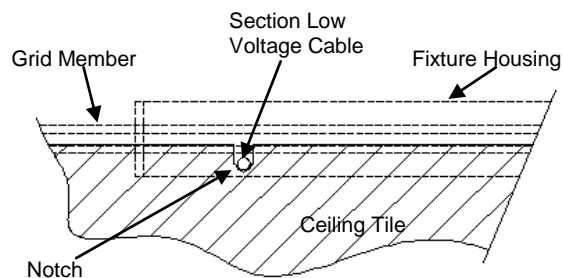


Figure 12 Top View