

# 4" VersaLux LED Ultra-Low Profile Slot with External Driver

LED

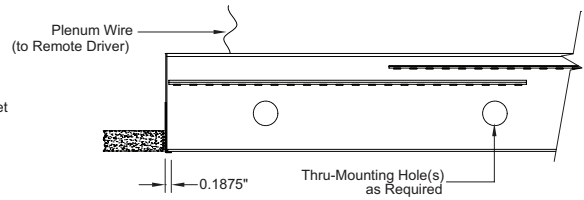
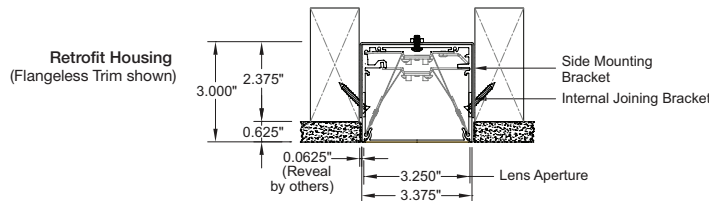
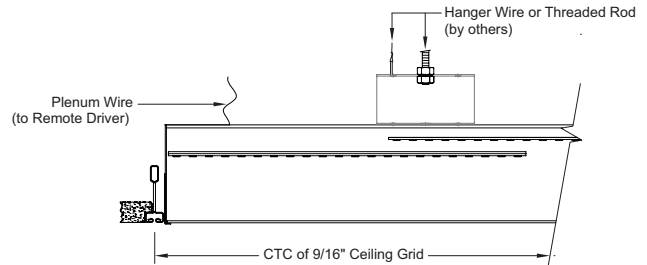
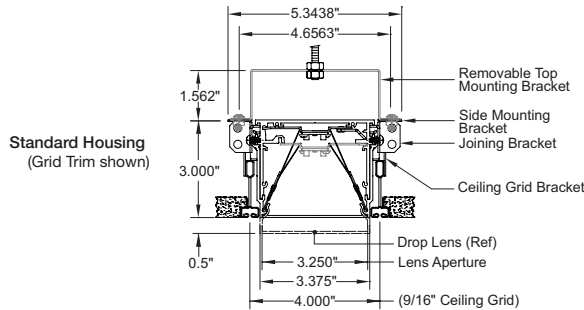


LED Linear Recessed Ultra-Low Profile Slot Flush Snap-in Lens, External Driver

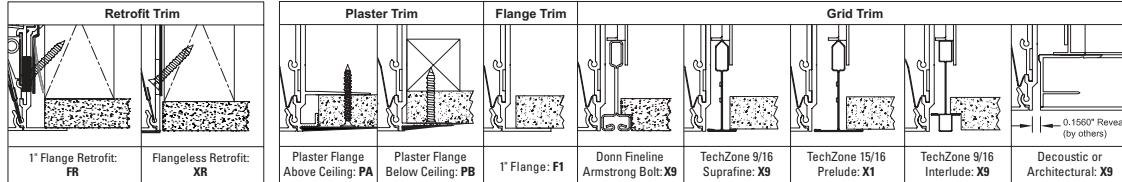
V LX4

Job Name \_\_\_\_\_

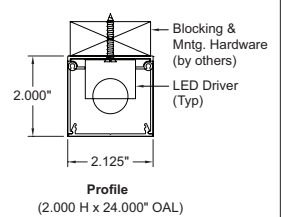
Fixture Type \_\_\_\_\_



### Ceiling Trim Details



### Remote Driver Enclosure



CRI	Color	Output	Dimming	Lens	Length(*)	Ceiling Trim
8 80+	27 2700K	S Standard	S Std. 0-10V 1% (3)	DF Diffuser	Nominal:	PA Plaster Flange Above
9 90+	30 3000K	H High	H ECO 1%	D1 Drop 1/2"	24 36 48	PB Plaster Flange Below
R RGB & RGBW	35 3500K	M Maximum	D DALI 1% (3)	BW Batwing	60 72 84	F1 Flange 1**
	40 4000K	Custom:	P POE (2)	LW Louver White	96 (see Page 3)	X9 9/16 Grid Trim
	TW 2700K-6500K (1), (3)	Specify Lm/Ft (2)	W Wireless (2)	LS Louver Specular	Custom:	X1 15/16 Grid Trim
	GB RGB Color	F Fixed for RGB & RGBW	X DMX for RGBs		xxx (in inches)	FR 1" Flange Retrofit
	G3 RGB White (3000K only)					XR Flangeless Retrofit

Product Code Example: VLX4-RG3FXD1-120-X9-W

Ultra-Low profile, flush lens slot utilizing high performance LED boards, snap-in lenses and full reflectors with an external driver. Use in ceilings where an extra low profile is required. Available with plaster, flange or grid trim options for new construction and flange or flangeless trims for retrofit installations.

### Features

- Starfire's proprietary EvenGlow™ system provides uniform illumination from end-to-end without lamp imaging, bright spots or shadows at any length
- Fixtures fabricated to any length without custom engineering
- Exceptional lumen per watt efficiency
- High efficiency, low cost, Tunable White option
- High performance snap-in lenses; flush diffusion, flush batwing, or drop with illuminated end caps, plus white or specular louver options

### Fixture Specifications

- Housing/Trim: Heavy-duty extruded aluminum
- Finish: White (std), custom available
- Weight: Approx. 3.3 lbs. per linear foot
- UL Listed, (indoor non-condensing)

### Electrical

- Power consumption: Per specification based on LED configuration
- Input Voltage: 120-277V universal driver
- Ambient operating range: -4 °F to +100 °F
- Remote electronic drivers
- Class 2 plenum wiring between fixture and remote driver
- Drivers with full dimming range at any output choice
- Dimming: 0-10V 1% standard, contact factory for options

### Mounting

- Universal mounting brackets provided. Contact factory for alternate mounting
- Driver enclosure will support one fixture. Contact factory for other configurations

### Ceiling Cutout: Refer to Page 3

### Options (Consult factory)

- Occupancy sensor, daylight control module
- EM pack (Delivers 800+ total lumens for 90 mins). Specify length and location (+/- 2ft) at time of order
- HVAC, fire sprinkler, surveillance or public address systems integration

(1) Other ranges possible – Consult factory

(2) Specify – Factory to confirm

(3) If Tunable White: Std. 0-10V and DALI only

\*Fixture must be installed before ceiling



STARFIRE LIGHTING, INC.  
7 Donna Drive, Wood-Ridge, NJ 07075  
starfirelighting.com

P 201.438.9540  
F 201.438.9541

All designs and drawings are the property of STARFIRE LIGHTING, INC. We reserve the right to make changes to specifications and approved designs at any time without notice to facilitate manufacturing methods to the extent that such changes do not compromise design integrity. All performance specifications are subject to +/- 10% deviation.

# 4" VersaLux LED Ultra-Low Profile Slot with Flush Snap-in Lens and External Driver

**VLX4**

Linear Photometrics

## White LEDs

- Choice of lumen output levels:
  - S:** Standard
  - H:** High
  - M:** Maximum
  - C:** Custom (between 200 and 1100 Lm/Ft) depending upon configuration, consult factory
- LED Efficiency: Up to 160 Lm/Wt at Max. output and 180 Lm/Wt at Standard power (at 80+ CRI)
- Proprietary in-house, ultra-tight Vf binned LEDs for uniform intensity
- Color Consistency: Equal or better than 3 SCDM
- L70: 50,000+ hours at Max. output
- 5 year limited warranty\*

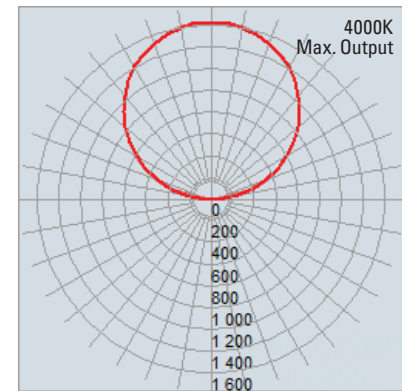
## RGB & RGBW LEDs

### Maximum Output (Diffuser)

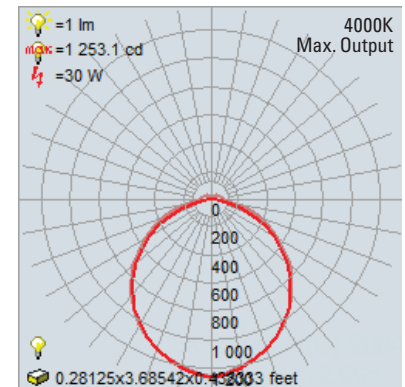
	Lm/Ft	Wt/Ft	Lm/Wt
<b>RGB (all on)</b>	<b>279</b>	10.4	26.9
<b>White</b>	<b>339</b>	3.9	87.7
<b>RGBW (all on)</b>	<b>618</b>	14.2	43.5

Output adjustable with DMX-512 Control

### Diffuser



### Drop 1/2"



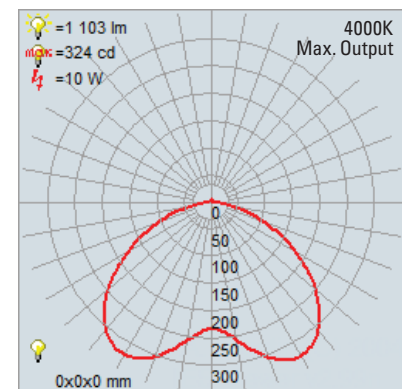
### Diffuser

80 CRI		4000K		3500K		3000K		2700K	
Output Setting	Lm/Ft	Wt/Ft	Lm/Wt	Wt/Ft	Lm/Wt	Wt/Ft	Lm/Wt	Wt/Ft	Lm/Wt
<b>S Standard</b>	<b>500</b>	3.89	128	3.97	125.9	4.14	120.8	4.69	106.7
<b>H High</b>	<b>750</b>	6.09	123.1	6.22	120.5	6.5	115.4	7.5	100
<b>M Maximum</b>	<b>1000</b>	8.5	117.7	8.68	115.2	9.09	110.1	10.71	93.3

### 1/2" Drop Lens

80 CRI		4000K		3500K		3000K		2700K	
Output Setting	Lm/Ft	Wt/Ft	Lm/Wt	Wt/Ft	Lm/Wt	Wt/Ft	Lm/Wt	Wt/Ft	Lm/Wt
<b>S Standard</b>	<b>500</b>	3.7	133.6	3.8	130.9	4.0	125.6	4.5	111.2
<b>H High</b>	<b>750</b>	5.8	128.2	6.0	125.6	6.2	120.3	7.2	104.5
<b>M Maximum</b>	<b>1000</b>	8.1	122.9	8.3	120.2	8.7	114.9	10.2	97.8

### Batwing



### Batwing

80 CRI		4000K		3500K		3000K		2700K	
Output Setting	Lm/Ft	Wt/Ft	Lm/Wt	Wt/Ft	Lm/Wt	Wt/Ft	Lm/Wt	Wt/Ft	Lm/Wt
<b>S Standard</b>	<b>500</b>	4.1	122.2	4.2	119.8	4.4	114.9	4.9	101.3
<b>H High</b>	<b>750</b>	6.4	116.8	6.6	114.4	6.8	109.5	7.9	94.7
<b>M Maximum</b>	<b>1000</b>	9.0	111.5	9.2	109.1	9.6	104.2	11.4	88.0

\* See Starfire website for Product Limited Warranty



STARFIRE LIGHTING, INC.  
7 Donna Drive, Wood-Ridge, NJ 07075  
starfirelighting.com

P 201.438.9540  
F 201.438.9541

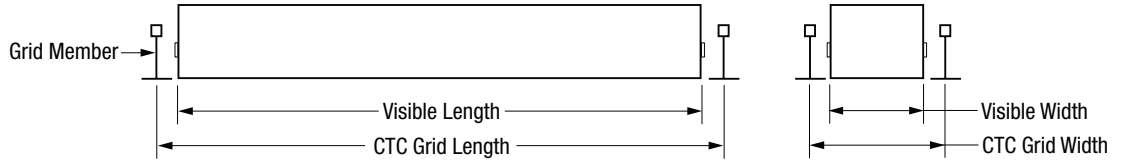
All designs and drawings are the property of STARFIRE LIGHTING, INC. We reserve the right to make changes to specifications and approved designs at any time without notice to facilitate manufacturing methods to the extent that such changes do not compromise design integrity. All performance specifications are subject to +/- 10% deviation.

# 4" VersaLux LED Ultra-Low Profile Slot with Flush Snap-in Lens and External Driver

V LX4

## Ceiling Dimensions

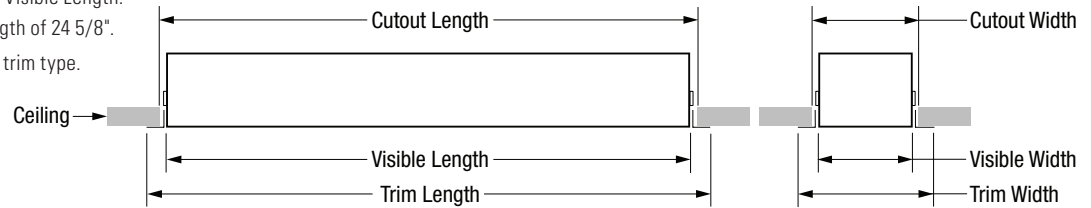
### Grid Ceiling Dimensions



Order CTC Grid Length	9/16", Don Fineline, Decoustic			15/16"		
	Visible Length	Visible Width	CTC Grid Width	Visible Length	Visible Width	CTC Grid Width
24"	23 3/8"	3 3/8"	4"	23"	3 3/8"	4 3/8"
30"	29 3/8"	3 3/8"	4"	29"	3 3/8"	4 3/8"
36"	35 3/8"	3 3/8"	4"	35"	3 3/8"	4 3/8"
48"	47 3/8"	3 3/8"	4"	47"	3 3/8"	4 3/8"
60"	59 3/8"	3 3/8"	4"	59"	3 3/8"	4 3/8"
72"	71 3/8"	3 3/8"	4"	71"	3 3/8"	4 3/8"
84"	83 3/8"	3 3/8"	4"	83"	3 3/8"	4 3/8"
90"	89 3/8"	3 3/8"	4"	89"	3 3/8"	4 3/8"
96"	95 3/8"	3 3/8"	4"	95"	3 3/8"	4 3/8"

### Custom Fixture Length Example:

A 24" Nominal Order Length yields a 23 3/8" Visible Length.  
 For a 24" Visible Length, order a Custom Length of 24 5/8".  
 See charts below for length adjustments per trim type.



### Solid Ceiling Dimensions

Nominal Order Length	Visible Length	Visible Width	Plaster Flange				1" Flange <sup>(1)</sup>				Retrofit 1" Flange <sup>(2)</sup>			
			Trim Length	Trim Width	Cutout Length	Cutout Width	Trim Length	Trim Width	Cutout Length	Cutout Width	Trim Length	Trim Width	Cutout Length	Cutout Width
24"	23 3/8"	3 3/8"	26 3/32"	6 3/32"	24 1/4"	4 1/4"	25 1/8"	5 1/8"	24 1/4"	4 1/4"	25 1/8"	5 1/8"	24 1/4"	4 1/4"
30"	29 3/8"	3 3/8"	32 3/32"	6 3/32"	30 1/4"	4 1/4"	31 1/8"	5 1/8"	30 1/4"	4 1/4"	31 1/8"	5 1/8"	30 1/4"	4 1/4"
36"	35 3/8"	3 3/8"	38 3/32"	6 3/32"	36 1/4"	4 1/4"	37 1/8"	5 1/8"	36 1/4"	4 1/4"	37 1/8"	5 1/8"	36 1/4"	4 1/4"
48"	47 3/8"	3 3/8"	50 3/32"	6 3/32"	48 1/4"	4 1/4"	49 1/8"	5 1/8"	48 1/4"	4 1/4"	49 1/8"	5 1/8"	48 1/4"	4 1/4"
60"	59 3/8"	3 3/8"	62 3/32"	6 3/32"	60 1/4"	4 1/4"	61 1/8"	5 1/8"	60 1/4"	4 1/4"	61 1/8"	5 1/8"	60 1/4"	4 1/4"
72"	71 3/8"	3 3/8"	74 3/32"	6 3/32"	72 1/4"	4 1/4"	73 1/8"	5 1/8"	72 1/4"	4 1/4"	73 1/8"	5 1/8"	72 1/4"	4 1/4"
84"	83 3/8"	3 3/8"	86 3/32"	6 3/32"	84 1/4"	4 1/4"	85 1/8"	5 1/8"	84 1/4"	4 1/4"	85 1/8"	5 1/8"	84 1/4"	4 1/4"
90"	89 3/8"	3 3/8"	92 3/32"	6 3/32"	90 1/4"	4 1/4"	91 1/8"	5 1/8"	90 1/4"	4 1/4"	91 1/8"	5 1/8"	90 1/4"	4 1/4"
96"	95 3/8"	3 3/8"	98 3/32"	6 3/32"	96 1/4"	4 1/4"	97 1/8"	5 1/8"	96 1/4"	4 1/4"	97 1/8"	5 1/8"	96 1/4"	4 1/4"
Custom Order Length	Order Length - 5/8"	3 3/8"	Order Length + 2 3/32"	6 3/32"	Order Length + 1/4"	4 1/4"	Order Length + 1 1/8"	5 1/8"	Order Length + 1/4"	4 1/4"	Order Length + 1 1/8"	5 1/8"	Order Length + 1/4"	4 1/4"

Nominal Order Length	Visible Length	Visible Width	Grid Trim <sup>(3)</sup>				Retrofit Flangeless			
			Trim Length	Trim Width	Cutout Length	Cutout Width	Trim Length	Trim Width	Cutout Length	Cutout Width
24"	23 3/8"	3 3/8"	23 3/8"	4 3/16"	23 1/2"	3 1/2"	25 1/8"	3 3/8"	23 1/2"	3 1/2"
30"	29 3/8"	3 3/8"	29 3/8"	4 3/16"	29 1/2"	3 1/2"	31 1/8"	3 3/8"	29 1/2"	3 1/2"
36"	35 3/8"	3 3/8"	35 3/8"	4 3/16"	35 1/2"	3 1/2"	37 1/8"	3 3/8"	35 1/2"	3 1/2"
48"	47 3/8"	3 3/8"	47 3/8"	4 3/16"	47 1/2"	3 1/2"	49 1/8"	3 3/8"	47 1/2"	3 1/2"
60"	59 3/8"	3 3/8"	59 3/8"	4 3/16"	59 1/2"	3 1/2"	61 1/8"	3 3/8"	59 1/2"	3 1/2"
72"	71 3/8"	3 3/8"	71 3/8"	4 3/16"	71 1/2"	3 1/2"	73 1/8"	3 3/8"	72 1/4"	3 1/2"
84"	83 3/8"	3 3/8"	83 3/8"	4 3/16"	83 1/2"	3 1/2"	85 1/8"	3 3/8"	84 1/4"	3 1/2"
90"	89 3/8"	3 3/8"	89 3/8"	4 3/16"	89 1/2"	3 1/2"	91 1/8"	3 3/8"	90 1/4"	3 1/2"
96"	95 3/8"	3 3/8"	95 3/8"	4 3/16"	95 1/2"	3 1/2"	97 1/8"	3 3/8"	96 1/4"	3 1/2"
Custom Order Length	Order Length - 5/8"	3 3/8"	Order Length - 5/8"	4 3/16"	Order Length - 1/2"	3 1/2"	Order Length - 5/8"	3 3/8"	Order Length - 1/2"	3 1/2"

For lengths over 96", consult factory regarding cutout dimensions.

<sup>(1)</sup> Fixture must be installed before ceiling.

<sup>(2)</sup> Fixture may be installed after ceiling.

<sup>(3)</sup> Grid Trim typically installed before ceiling or from above solid ceiling.



STARFIRE LIGHTING, INC.  
 7 Donna Drive, Wood-Ridge, NJ 07075  
 starfirelighting.com

P 201.438.9540  
 F 201.438.9541

All designs and drawings are the property of STARFIRE LIGHTING, INC. We reserve the right to make changes to specifications and approved designs at any time without notice to facilitate manufacturing methods to the extent that such changes do not compromise design integrity. All performance specifications are subject to +/- 10% deviation.