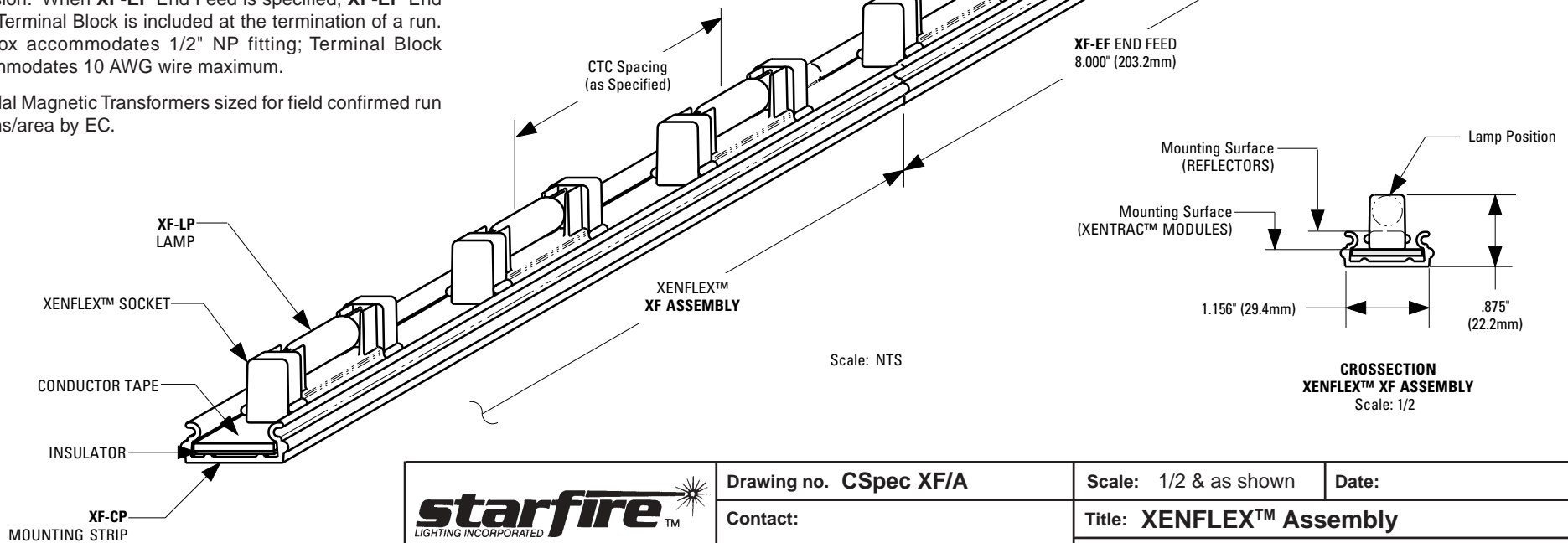
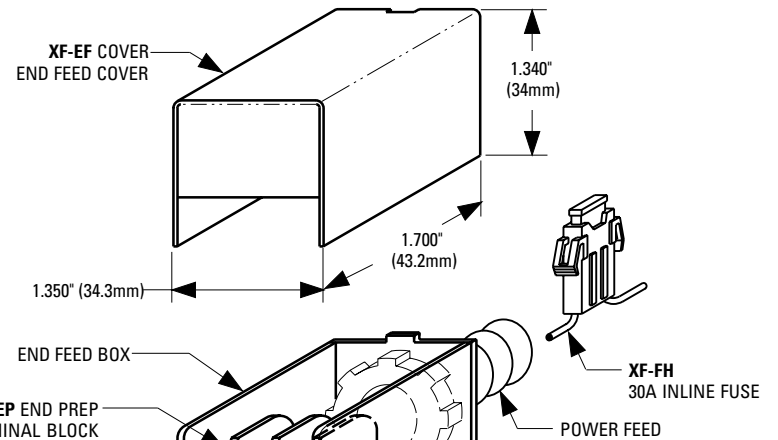


Starfire Catalog No.	Client Fixture Type	Voltage	Lamp		Socket Spacing
			Wattage	Envelope	
			<input type="checkbox"/> Clear <input type="checkbox"/> Frost		
			<input type="checkbox"/> Clear <input type="checkbox"/> Frost		
			<input type="checkbox"/> Clear <input type="checkbox"/> Frost		
			<input type="checkbox"/> Clear <input type="checkbox"/> Frost		
			<input type="checkbox"/> Clear <input type="checkbox"/> Frost		

Remarks:

**Notes:**

- XENFLEX™** is UL listed for dry locations (12 and 24 volt); wet locations (12 volt only). **XF-EF** End Feed and **XF-CP** Mounting Strip are required to maintain UL listing. Fixture is also listed with CSA and meets New York City and Chicago electrical standards.
- XF-FH** 30A Inline Fuse should be wired into secondary transformer circuit as a safety measure.
- XENFLEX™ XF-EF** End Feed consists of UL Box/Cover attached to a short length of **XF-CP** Mounting Strip plastic extrusion. When **XF-EF** End Feed is specified, **XF-EP** End Prep Terminal Block is included at the termination of a run. UL Box accommodates 1/2" NP fitting; Terminal Block accommodates 10 AWG wire maximum.
- Toroidal Magnetic Transformers sized for field confirmed run lengths/area by EC.



Scale: NTS

**CROSSSECTION XENFLEX™ XF ASSEMBLY**  
Scale: 1/2



7 Donna Drive, Wood-Ridge, NJ 07075  
800-443-8823 Fax: 201-438-9541

All designs and/or scale drawings shall remain the property of STARFIRE LIGHTING, INC. and may not be reproduced without written consent.

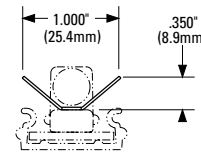
Drawing no. **CSpec XFA** Scale: 1/2 & as shown Date:

Contact: Title: **XENFLEX™ Assembly**

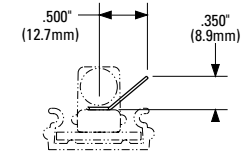
Project:

- STARFIRE LIGHTING, INC. reserves the right to make minor structural changes on approved designs to facilitate manufacturing without compromising design integrity.
- Dimensions in inches are at a higher level of accuracy than metric dimensions.

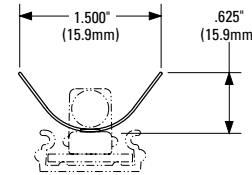
Client Fixture Type	Cat No.	Accessory	Color				
			White	Brass	Chrome	Clear	Custom
	XF-SYM	Symmetric Reflector					
	XF-ASY	Asymmetric Reflector					
	XF-PAR	Parabolic Reflector					
	XF-HPR	Half Parabolic Reflector					
	XF-L	Lens					
	XF-XTL	Lens/Diffuser					
	XF-XT	Aluminum "L" Bracket					
	XF-AR	Module					
	XF-MR11	Module					
	XF-MR16	Module					



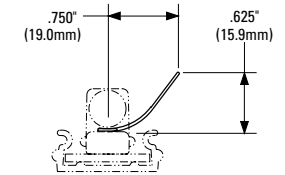
XF-SYM Symmetric Reflector



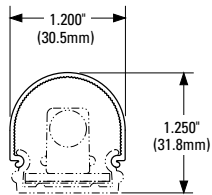
XF-ASY Asymmetric Reflector



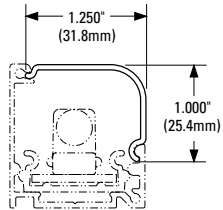
XF-PAR Parabolic Reflector



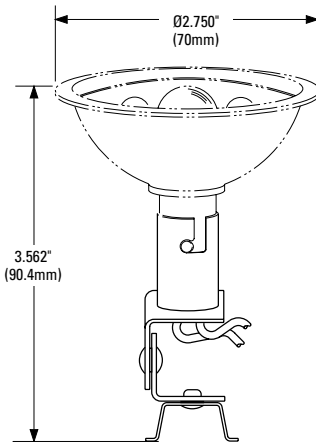
XF-HPR Half Parabolic Reflector



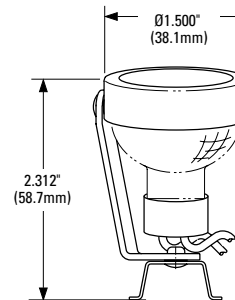
XF-L Lens



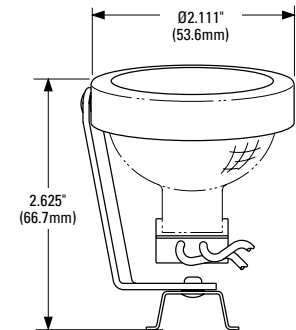
XF-XTL Lens/Diffuser



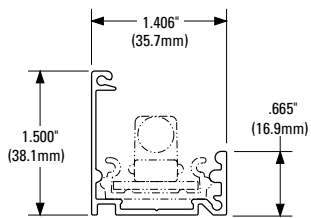
XF-AR Module



XF-MR11 Module



XF-MR16 Module



XF-XT Aluminum "L" Bracket Extrusion



7 Donna Drive, Wood-Ridge, NJ 07075  
800-443-8823 Fax: 201-438-9541

All designs and/or scale drawings shall remain the property of STARFIRE LIGHTING, INC. and may not be reproduced without written consent.

Drawing no. <b>CSpec XF/AA</b>	Scale: 1/2	Date:
Contact:	Title: <b>XENFLEX™ Accessories</b>	
	Project:	

- STARFIRE LIGHTING, INC. reserves the right to make minor structural changes on approved designs to facilitate manufacturing without compromising design integrity.
- Dimensions in inches are at a higher level of accuracy than metric dimensions.