

T5 SUBMINIATURE FLUORESCENT LAMP FIXTURES

- DO NOT DISCARD.
- PLEASE READ CAREFULLY AND UNDERSTAND PRIOR TO INITIAL LAMPING OR RELAMPING.

INTERNAL CIRCUIT BREAKER

The T5 ballasts that are used as component parts in the manufacture of Starfire Lighting fixtures will not drive a defective or improperly seated lamp. In order to accomplish this capability the ballasts have an internal circuit breaker function. The internal breaker can be tripped by a bad lamp, a lamp that is not "fully seated", or by the absence of a lamp.

If a T5 fixture is observed to be energized but no light is being produced, it is possible that its internal breaker is tripped. The following conditions can cause this:

1. A bad filament: Check for continuity through the filaments with an ohmeter. The ballast will not start unless all filaments have continuity from one side to the other. If this is observed, try replacing the lamp.
2. A degassed lamp: Sometimes a crack may be visible. Sometimes when a lamp is partially degassed, the ballast will try to start and give just one flash from the lamps before the breaker trips. If this is observed, try replacing the lamp.
3. Improper wiring: The wiring has to be exactly as shown on the label of the ballast. In particular a loose wire will cause the breaker to trip.
4. Degraded lamp: The breaker will be tripped by a lamp which seems to be at the end of its life. If after checking and reapplying the power the fixture produces light for less than a minute, a lamp is probably degraded and one or both lamps should be replaced.

RESETTING THE INTERNAL CIRCUIT BREAKER

1. The breaker can be reset by removing and replacing the lamps.
2. The breaker can also be reset by turning off the power, replacing the lamp, and turning the power back on (see Fig. 1).

IT IS RECOMMENDED THAT THE ABOVE PROCEDURE #2 BE UTILIZED WHENEVER LAMPING OR RELAMPING IS REQUIRED!

If the above checks have been made, and the lamps replaced, and resetting the internal breaker has been performed, yet there is still no light; try replacing the ballast. If replacement of the ballast cures the problem, the original ballast may have failed. This can be confirmed by reinstalling the suspect ballast and verifying that the problem reappears.

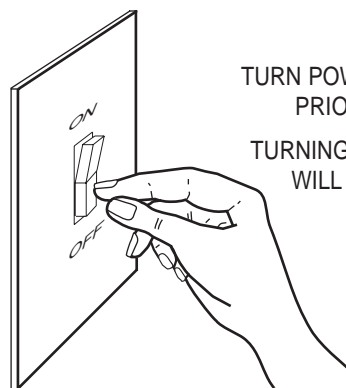
GENERAL PRECAUTIONS

To avoid electrical shock or burn, do not remove or insert lamp when power is on. Excessive force during installation could cause lamp breakage and result in injury from glass particles. Do not bend or twist lamp.

ALTERNATIVE LAMPS

The ballasts for T5 lamps may only be used with the exact lamps specified. The reason for this is that as part of normal operation, the ballast continuously checks certain lamp parameters which are particular to the specified lamp. If these parameters are out of specification, the breaker function is tripped and ballast operation ceases.

FIG. 1



IMPORTANT:

TURN POWER COMPLETELY OFF PRIOR TO ANY RELAMPING.

TURNING THE POWER BACK ON WILL RESET THE BALLAST'S INTERNAL BREAKER.

REMOTELY MOUNTED BALLASTS

In order to take maximum advantage of the small size offered by the T5 lamp, it is often desirable to mount the lamps and ballasts remotely from each other. This can easily be done at distances up to 8 feet. For distances greater than 8 feet, consult factory.